



FLUOKIT M+

MV modular switchboard



To ensure maximum availability of your distribution network, you need electrical equipment of the highest quality. We offer you highly reliable technical solutions designed to reduce the costs of civil work, transportation, installation and operation.

With more than 600 000 modular cubicles in service throughout the world, we have unrivalled experience in this field.

We have built on this experience to design and improve the Fluokit M+ range to ensure optimum availability of your installations.

A GOOD SOLUTION FOR YOUR MV INSTALLATION

The Fluokit M+ range of distribution cubicles provides all the functions needed to design MV distribution switchboards for indoor applications up to 24kV. Fluokit M+ is designed for use in public distribution substations, delivery substations with high and low voltage metering, substations in industry and tertiary internal networks.

The modular design of Fluokit M+ with its wide range of functions, allows the optimum switchboard configuration for every electrical scheme.

Fluokit M+ combines the reliability and long life of switching in SF6 or vacuum with isolation in air.

Fluokit M+ is designed to meet the requirements of IEC standards as well as many national specifications. It is manufactured in our factories which have been certified as conforming with the requirements of ISO 9001 or ISO 14001 standards.



Customer benefits

- Improved personnel safety
- Easy operation
- Reduced footprint
- Compact and modular design
- Wide range of functions
- Low maintenance
- Easy to upgrade
- Proven reliability



FLUOKIT M+

MV modular switchboard

BUILT FOR ENHANCED PERSONNEL SAFETY

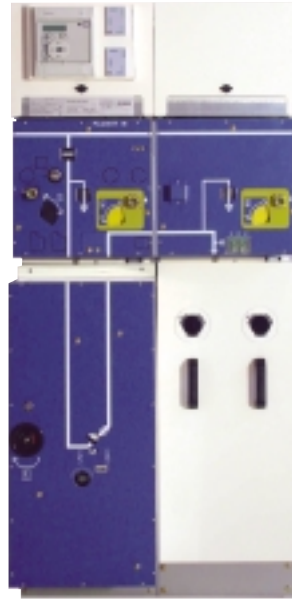
Construction specifications used for the design of Fluokit M+ ensure that installations provide personnel protection to the highest level:

- > Internal arc containment in accordance with IEC standards
- > Operator protection against internal faults through a hot gas duct at the back of the cubicle
- > All-metal construction for permanent earthing continuity.

SIMPLE AND SAFE OPERATION

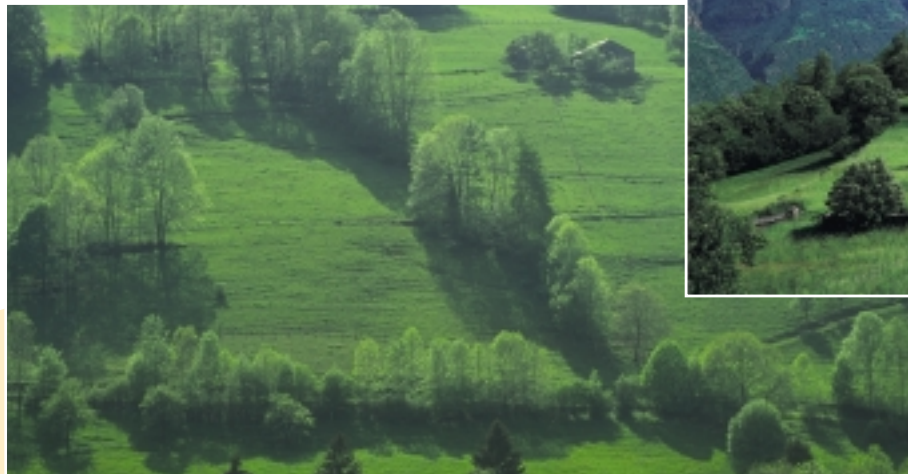
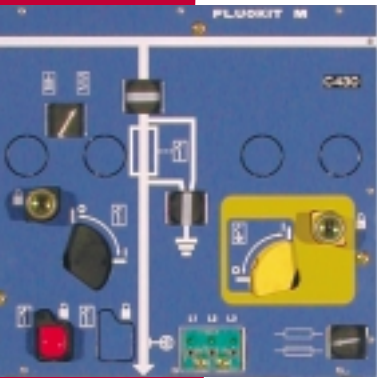
All operations and access to the various compartments are made from the front of the cubicles. Fluokit M+ cubicles include the following features in order to increase operating safety:

- > An interface panel allowing clear separate operation of each of the switching, isolating and earthing functions
- > Push button to directly trip the load break switch
- > In-line mimic diagram giving reliable indication of the status of each function using robust mechanical linkages
- > Clear indicators showing the status of the trip operating mechanism and the fuses
- > Earthing switch with fault making capacity
- > Position of the earthing switch directly visible through inspection windows in the front of the cubicle
- > Access to cable compartment through easily removable cover
- > A comprehensive range of mechanical interlocking, key locking and padlocking facilities



ENVIRONMENTALLY FRIENDLY

We care about the environment. Therefore Fluokit M+ has been designed to use specially selected materials which can be easily recycled at the end of its life.



Environment

A WIDE CHOICE OF FUNCTIONS

Fluokit M+ meets your specific requirements in a space saving configuration.

As the cubicles are modular and have a very small footprint, switchboards can be supplied as separate units and arranged according to your needs.

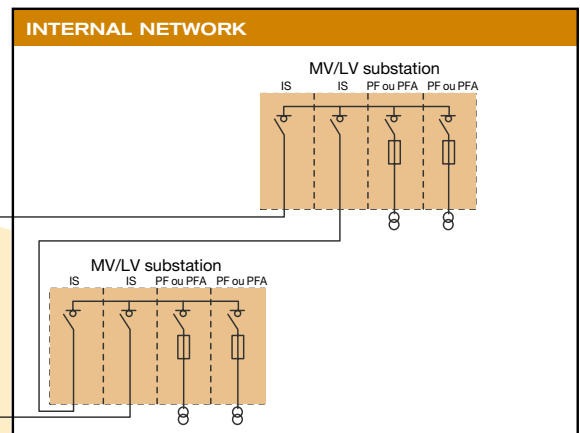
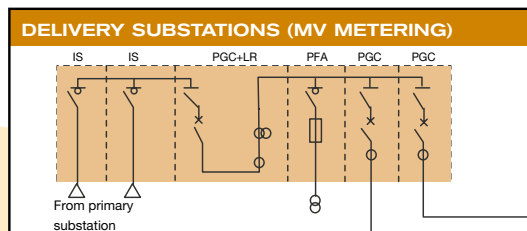
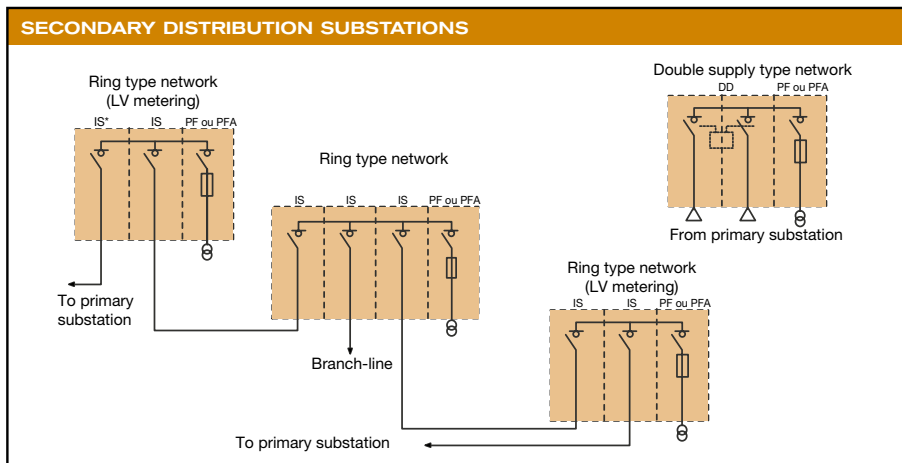
Load-break switch units are available in 375, 500 or 750 mm widths, while circuit breaker units are available in 750, 875 and 1125 mm widths. All cubicles have a standard base depth of 850 mm, with a maximum overall equipment depth of 1100 mm depending on the function.

Basic cubicles are equipped with either SF₆ load-break switch, disconnector or circuit-breaker.

Circuit breakers using either SF₆ or vacuum switching technology are available.

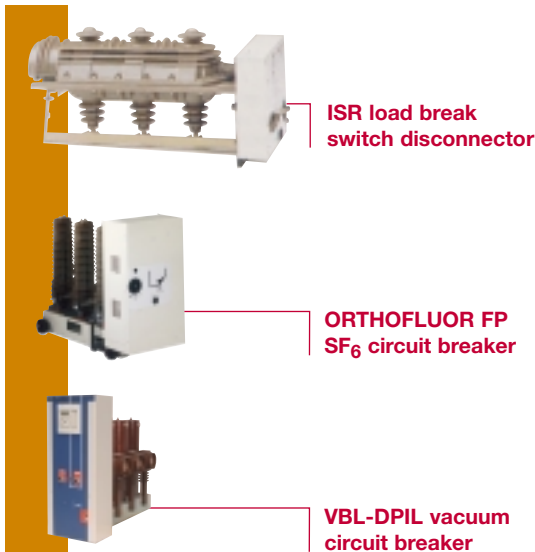
SCHEME						
FUNCTION	IS	PF or PFA	TM	PGC	PG-coupling +	LR
WIDTH (mm)	375/500	375/500/750	375/500	750/875/1125	375	375/500/750
	Incoming or feeder with load break switch	Cubicle with fused load break switch for transformer protection	Cubicle with disconnector. Fused VT's for HV metering function	Cubicle with disconnector and C.B. for cable protection	Cubicle with disconnector and C.B. for coupling,	+ Bus riser

EXAMPLES OF APPLICATIONS





High-performance switching devices



ISR load break
switch disconnector

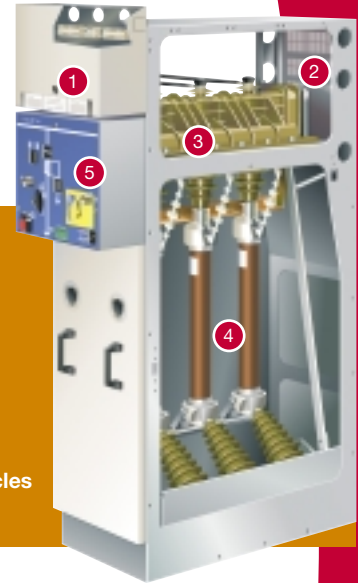
ORTHOFLUOR FP
SF₆ circuit breaker

VBL-DPIL vacuum
circuit breaker

Separate compartments

- ① Low voltage cabinet
- ② Busbar compartment
- ③ Switchgear compartment
- ④ Cables compartment
- ⑤ Operating mechanism

A full range of prefabricated cubicles
with small footprint



ISR LOAD BREAK SWITCH DISCONNECTOR

ISR load-break switch disconnector is sealed for life and equipped with either hand or motorized operating mechanisms which can be replaced with the switch in any position.

ORTHOFLUOR FP, SF₆ CIRCUIT BREAKER

Disconnectable SF₆ circuit breaker equipped with hand or motorized operating mechanism.

VBL / DPIL, VACUUM CIRCUIT BREAKER

VBL is a disconnectable vacuum circuit breaker. The DPIL is a fixed type VBL fitted with a self or dual powered integrated protection and supervision system designed to ensure the complete and safe protection of medium voltage feeders without requiring an auxiliary power supply.

RATED VOLTAGE (kV)	7.2	12	17.5	24
>> Rated withstand voltage				
Lighting impulse (kVp)				
To earth and between poles	60	75	95	125
Isolating distance	70	85	110	145
>> 50 Hz 1 mn. (kV rms)				
To earth and between poles	20	28	38	50
Isolating distance	23	32	45	60
>> Short time current				
Rms value (kA 1s)	≤25	≤25	≤25	≤20
Peak value (kA peak)	≤63	≤63	≤63	≤50
>> Cubicle rated current (A)	≤630	≤630	≤630	≤630
>> Busbar rated current (A)	≤1250	≤1250	≤1250	≤1250
>> Withstand to internal arc (kA 1s)	20	20	20	20
>> Earthing switch making capacity (kA)	≤63	≤63	≤63	≤50
>> Main enclosure degree of protection	IP3X	IP3X	IP3X	IP3X

Breaking technologies of circuit breaker: SF₆ or Vacuum.
Values according to IEC standards.

Dimensions in mm

FUNCTIONS	WIDTH	HEIGHT*	DEPTH ON FLOOR
>> with load break switch	375/500/750	1610	850
>> with circuit breaker	750/875/1125	1610	850

* 1950 internal arc withstand

Our policy is one of continuous development. Accordingly the design of our products may change at any time. Whilst every effort is made to produce up to date literature, this brochure should only be regarded as a guide and is intended for information purposes only. Its contents do not constitute an offer for sale or advice on the application of any product referred to in it. We cannot be held responsible for any reliance on any decisions taken on its contents without specific advice.

AREVA T&D Worldwide Contact Centre:
<http://www.aveva-td.com/contactcentre/>
Tel.: +44 (0) 1785 250 070

www.aveva-td.com